

# Evaluating Assessment Evolution: Paper-Based vs Digital On-Screen Marking in Modern Education

Mr. Manoj Dattaram Gurav<sup>1</sup>, Mr. Ravindra Sitaram Masaye<sup>2</sup> Mr. Anand Gopinath Shelar<sup>3</sup>,  
Miss. Maya Rajendra Bodke<sup>4</sup>

Principal Navi Mumbai Vidyalay & Junior College, Vashi, Navi Mumbai, India <sup>1</sup>

Assistant Professor Dr. Ambedkar College of Commerce & Economics, Wadala, India <sup>2</sup>

Assistant Professor Ramsheth Thakur College of Commerce & Science, Kharghar, Navi Mumbai, India. <sup>3</sup>

Assistant Teacher Navi Mumbai Vidyalay & Junior College, Vashi, Navi Mumbai, India <sup>4</sup>

**Abstract:** *The transformation of assessment systems from traditional paper-based evaluation to digital on-screen marking (OSM) represents a major shift in modern education. This study critically examines both systems in terms of efficiency, reliability, accuracy, transparency, and scalability. With increasing student enrollment and demand for rapid result processing, institutions are adopting digital solutions. The study is based on secondary data and comparative analysis of both systems.*

*The findings highlight that traditional offline evaluation is often time-consuming, labor-intensive, and prone to human errors such as miscalculation, inconsistent marking, and delays in result declaration. It also lacks transparency and real-time monitoring. In contrast, digital on-screen marking ensures faster processing, standardized evaluation, automated totaling, and improved consistency across evaluators. Additionally, digital systems provide audit trails, remote accessibility, and enhanced data security, making the assessment process more transparent and accountable.*

*However, challenges such as infrastructural requirements, digital literacy gaps, and resistance to technological change persist in the adoption of online systems, whereas offline methods remain more accessible in low-resource environments. The study concludes that while digital marking systems offer significant advantages over traditional methods, a hybrid model combining both approaches can ensure a smoother transition and greater inclusivity in modern education systems.*

**Keywords:** Paper-Based Assessment, Digital Evaluation, On-Screen Marking, Educational Technology, Assessment Systems, Automated Marking, Examination Reforms.

## I. INTRODUCTION

Assessment is a fundamental component of the education system, serving as a structured mechanism to evaluate student learning outcomes, academic performance, and institutional effectiveness. For decades, traditional paper-based assessment has been the dominant mode due to its simplicity, familiarity, and minimal technological requirements. However, this method is often associated with challenges such as time-consuming evaluation processes, susceptibility to human errors, limited transparency, and logistical constraints in handling large volumes of answer scripts.

With the rapid advancement of technology and the increasing demand for efficiency in educational administration, digital on-screen marking (OSM) systems have emerged as a transformative alternative. These systems enable evaluators to assess scanned answer scripts through specialized software, offering features such as automated totaling, standardized marking schemes, and real-time monitoring. As a result, digital evaluation enhances accuracy, ensures consistency among evaluators, and significantly reduces the time required for result processing.

The shift from offline to online assessment is not merely a technological upgrade but a paradigm shift in educational evaluation practices. While digital systems provide improved transparency, accessibility, and scalability, their adoption also presents challenges, including infrastructural requirements, the need for digital literacy, and resistance to change



among stakeholders. In contrast, paper-based methods continue to hold relevance in resource-constrained environments due to their accessibility and ease of implementation.

This study, therefore, seeks to critically examine and compare paper-based and digital on-screen marking systems, highlighting their respective strengths, limitations, and implications for modern education. The transition reflects the broader movement toward digital transformation in education, emphasizing the need for balanced and inclusive assessment strategies.

## **II. OBJECTIVES OF THE STUDY**

The present study aims to systematically examine the evolution of assessment practices by focusing on both traditional and digital evaluation methods. The specific objectives are as follows:

- **To compare** the traditional paper-based assessment system with digital on-screen marking (OSM) in the context of modern education.
- **To evaluate** the relative efficiency, accuracy, reliability, and transparency of both assessment methods.
- **To analyze** the key advantages and limitations associated with offline and online evaluation systems.
- **To examine** the impact of digital assessment on administrative processes and result processing time.
- **To propose** practical recommendations for the effective implementation and integration of digital marking systems in educational institutions.

## **III. RESEARCH METHODOLOGY**

This study adopts a qualitative and comparative research design based primarily on secondary data sources. Relevant data has been collected from peer-reviewed academic journals, government reports, policy documents, institutional publications, and credible online databases focusing on assessment practices in education.

A comparative analytical approach has been employed to examine the differences between traditional paper-based assessment and digital on-screen marking (OSM) systems. The analysis is structured around key evaluation parameters, including speed of assessment, accuracy and consistency, transparency, cost-effectiveness, accessibility, and administrative efficiency.

To ensure a systematic evaluation, existing literature and case-based evidence were critically reviewed and synthesized. The study also incorporates insights from institutions that have implemented digital marking systems to understand practical implications and operational challenges.

Although the research does not involve primary data collection, efforts have been made to ensure the reliability and validity of findings by using reputable and recent sources. However, the study is limited by its dependence on secondary data and may not capture real-time institutional variations.

Overall, the methodology provides a comprehensive framework for analyzing the evolution of assessment systems and facilitates a balanced comparison between offline and online evaluation practices.

## **IV. LITERATURE REVIEW**

The rapid advancement of educational technology has significantly influenced assessment practices, leading to a growing body of research comparing traditional paper-based evaluation with digital on-screen marking (OSM) systems. The literature on assessment evolution reflects a shift from manual, resource-intensive processes toward more efficient, technology-driven approaches that aim to enhance accuracy, transparency, and scalability.

Scholars in the field of educational assessment have extensively examined the effectiveness of both offline and online evaluation methods. While traditional paper-based marking has been valued for its simplicity and accessibility, numerous studies have identified its limitations, including susceptibility to human error, inconsistencies in marking, and delays in result processing. In contrast, digital marking systems have been recognized for their ability to standardize evaluation, automate administrative tasks, and provide real-time monitoring and audit trails.



This section reviews key contributions from various researchers and institutions to provide a comprehensive understanding of the comparative effectiveness, opportunities, and challenges associated with paper-based and digital on-screen marking systems in modern education.

a) **Handford (2026)**

Handford conducted an extensive study on the implementation of on-screen assessment systems in large-scale educational settings. The research highlights that digital marking significantly enhances **operational efficiency, scalability, and transparency**, particularly in national-level examinations. The study found that digital platforms enable centralized control, real-time monitoring, and faster result processing compared to traditional methods. However, Handford also identified critical challenges such as **technological readiness, infrastructural inequality, and system reliability risks**, especially in regions with limited digital access. The study concludes that while digital assessment offers long-term benefits, its success depends on strategic planning, robust infrastructure, and stakeholder preparedness.

b) **He (2019)**

Tung-hsien He examined the differences between paper-based scoring and on-screen scoring using a many-facet Rasch measurement model. The study focused on evaluating rater behavior, scoring consistency, and potential bias across different modes of assessment. Findings revealed that digital marking systems can reduce variability in scoring and improve consistency, as structured interfaces guide evaluators more effectively. However, the study also noted that differences in examiner familiarity with digital tools can influence scoring patterns. The research emphasizes the need for proper training to ensure uniformity and reliability in digital evaluation systems.

c) **Denison, Bate, and Thompson (2016)**

This study compared tablet-based marking with traditional paper-based marking in clinical education assessments. The authors found that digital marking tools significantly improved the quality and timeliness of feedback provided to students. Additionally, digital systems facilitated structured marking through predefined rubrics and enabled real-time data capture. The study also reported increased examiner satisfaction due to ease of use and reduced administrative burden. However, initial resistance and the need for training were identified as key challenges during the transition phase.

d) **Yang, Yan, and Coniam (2017)**

Yang and colleagues conducted a qualitative study exploring examiners' perceptions of on-screen marking systems. The research revealed that while digital marking improves efficiency and consistency, its effectiveness largely depends on system usability, interface design, and examiner familiarity. Many participants expressed initial hesitation due to lack of experience with digital tools. However, with adequate training and repeated use, evaluators reported increased confidence and acceptance. The study highlights that human factors play a crucial role in the successful implementation of digital assessment systems.

e) **Swart (2013)**

Arthur James Swart analyzed the effectiveness of on-screen marking in engineering education. The study identified several advantages, including reduced paper consumption, lower logistical costs, faster evaluation cycles, and improved data management. Digital systems also enabled remote marking, which increased flexibility for examiners. However, Swart pointed out challenges such as internet connectivity issues, system downtime, and resistance from traditional evaluators. The study suggests that institutions must invest in reliable infrastructure and provide adequate technical support for successful adoption.



## **V. PAPER-BASED ASSESSMENT SYSTEM**

Paper-based assessment involves manual evaluation of physical answer scripts. It has been the traditional method for decades and is still widely used in many regions.

### **5.1 Advantages**

Paper-based assessment systems are simple, cost-effective, and do not require any technological infrastructure, making them highly accessible, especially in regions with limited digital resources. They are familiar to educators and administrators, which reduces the need for training and ensures ease of implementation. Additionally, these systems are less dependent on electricity or internet connectivity, making them reliable in areas with unstable technical support. The traditional method also allows evaluators to physically interact with answer scripts, which some educators find more comfortable for detailed checking.

### **5.2 Limitations**

Despite their simplicity, paper-based systems are time-consuming and inefficient, particularly when handling large volumes of answer scripts. They are prone to human errors such as incorrect totaling, missed answers, or inconsistent marking. The process of transporting, handling, and storing physical answer sheets creates significant logistical challenges and increases the risk of damage, misplacement, or loss. Furthermore, the lack of real-time monitoring reduces transparency and accountability in the evaluation process. Delays in result processing are also common, affecting overall administrative efficiency.

## **VI. DIGITAL ON-SCREEN MARKING SYSTEM**

Digital marking involves scanning answer scripts and evaluating them electronically using software tools. This method is increasingly being adopted by educational institutions.

### **6.1 Advantages**

Digital assessment systems significantly enhance the efficiency and quality of evaluation. They enable **faster processing of answer scripts**, reducing the time required for result declaration. Features such as annotation tools, automated totaling, and predefined marking schemes help **improve accuracy and consistency**, minimizing human errors.

Additionally, digital platforms promote **transparency and accountability** through audit trails and real-time monitoring of the evaluation process. Centralized data storage ensures easy access, retrieval, and record management. Another major advantage is **remote accessibility**, allowing evaluators to assess scripts from different locations, thereby reducing logistical challenges and administrative burden. These systems also support scalability, making them suitable for large examination bodies.

### **6.2 Limitations**

Despite their numerous benefits, digital marking systems present certain challenges. The implementation requires **substantial investment in IT infrastructure**, including reliable internet connectivity, secure servers, and software systems. Institutions must also address **cybersecurity and data privacy concerns** to maintain the integrity of the evaluation process.

Effective use of digital systems depends on **adequate training and adaptability of faculty members**, which may require time and continuous support. Technical issues such as system downtime, software glitches, or connectivity failures can disrupt the evaluation process if proper backup mechanisms are not in place. Furthermore, resistance to change among stakeholders may slow down adoption, especially in institutions accustomed to traditional methods.



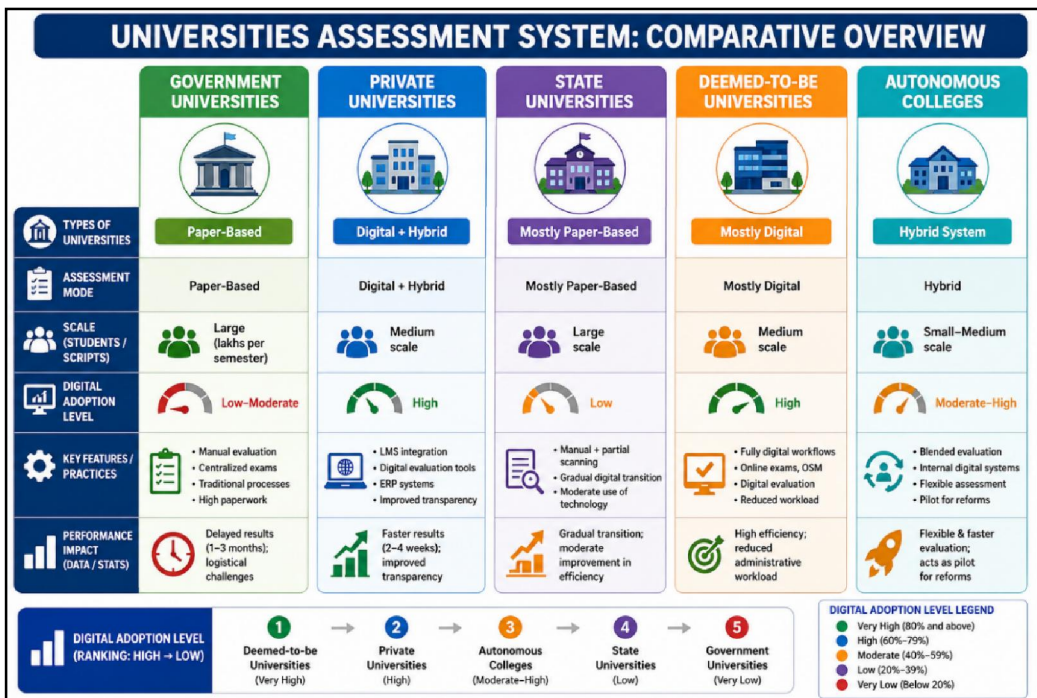
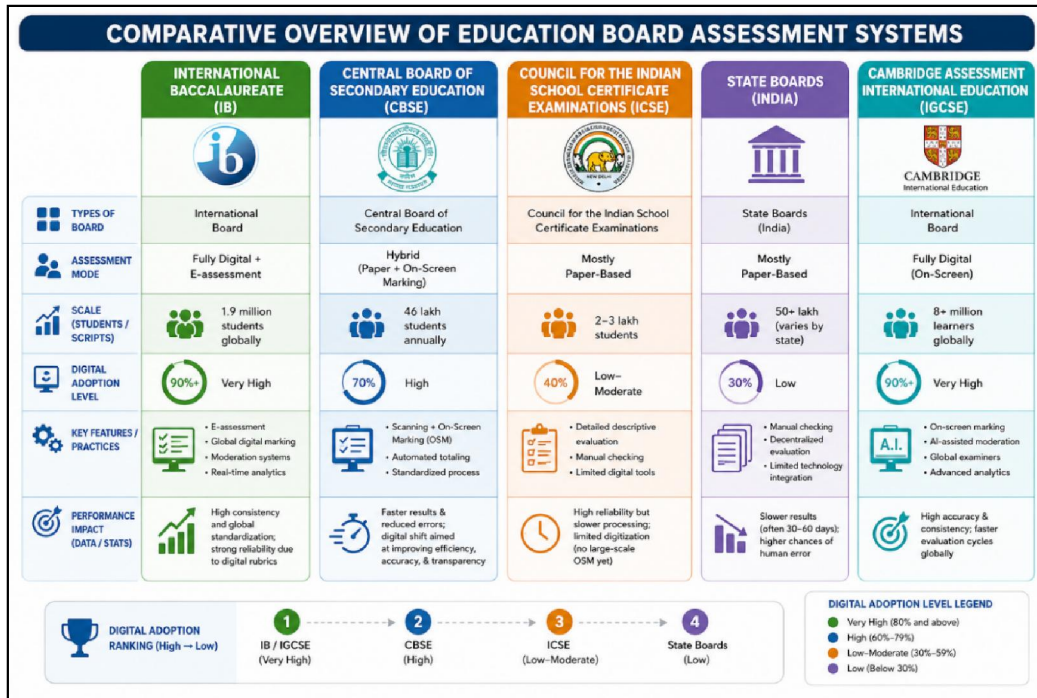
**VII. COMPARATIVE ANALYSIS**

Paper-based systems are slower and less reliable compared to digital systems. Digital marking offers higher accuracy, faster processing, and better transparency. However, paper-based methods remain relevant in low-resource environments.

Parameter	Paper-Based Assessment (Offline)	Digital On-Screen Marking (Online)
<b>Speed</b>	Slow; time-consuming evaluation and result processing	Fast; quick evaluation and rapid result generation
<b>Accuracy</b>	Moderate; prone to human errors (totalling, omission)	High; automated calculations reduce errors
<b>Reliability</b>	Less consistent due to subjective variation	More consistent due to standardized marking tools
<b>Transparency</b>	Limited; difficult to track evaluation process	High; audit trails and real-time monitoring
<b>Accessibility</b>	Limited to physical location	Remote access for evaluators
<b>Cost (Initial)</b>	Low setup cost	High initial investment in technology
<b>Cost (Long-term)</b>	High due to printing, storage, logistics	Cost-effective over time
<b>Administrative Work</b>	High manual workload	Reduced due to automation
<b>Risk Factors</b>	Risk of loss, damage, or misplacement of scripts	Risk of technical issues or system failure
<b>Suitability</b>	Suitable for low-resource environments	Suitable for large-scale and tech-enabled systems
<b>Speed</b>	Slow; time-consuming evaluation and result processing	Fast; quick evaluation and rapid result generation



**VIII. COMPARATIVE ANALYSIS OF ASSESSMENT PRACTICES ACROSS BOARDS & UNIVERSITIES**



### **IX. DISCUSSION**

The shift toward digital marking is increasingly inevitable due to growing student populations and the need for faster, more efficient evaluation systems. Digital methods, particularly On-Screen Marking (OSM), enhance accuracy, transparency, and result processing speed compared to traditional paper-based systems.

However, challenges such as infrastructure requirements, cybersecurity risks, and the need for faculty training must be addressed for effective implementation. An important operational issue observed in OSM is the **unequal distribution of answer scripts**, where faculty who log in earlier often complete more evaluations, leaving others with fewer or no scripts.

To resolve this, institutions should adopt a **structured allocation system**, assigning a fixed number of scripts to each faculty member in their digital “basket,” similar to offline evaluation practices. This would ensure fairness, balanced workload, and better monitoring.

A **hybrid model**, combining digital and traditional methods, offers a practical transition path by balancing efficiency with inclusivity. Overall, successful digital adoption requires proper planning, training, and system optimization.

### **X. FINDINGS**

The study reveals that digital marking systems significantly reduce evaluation time and enhance accuracy compared to traditional paper-based methods. Features such as automated totaling, standardized rubrics, and on-screen evaluation contribute to minimizing human errors and ensuring consistency in marking. Additionally, digital platforms improve transparency and accountability by enabling real-time tracking, audit trails, and easier access to evaluation records for review.

The findings also indicate that digital systems support scalability, making them highly suitable for handling large volumes of answer scripts efficiently. Institutions adopting digital evaluation report faster result declaration and improved administrative efficiency.

However, the effectiveness of digital marking largely depends on the availability of adequate infrastructure, including reliable internet connectivity and secure digital platforms. Furthermore, proper training and adaptability of faculty members are critical for smooth implementation. Without these, institutions may face operational challenges that can limit the full benefits of digital assessment systems.

### **XI. RECOMMENDATIONS**

- a) **Adopt a phased approach for digital implementation**  
Institutions should gradually transition from paper-based to digital systems by initially adopting hybrid models. Pilot testing in selected departments can help identify challenges and ensure smoother large-scale implementation.
- b) **Provide training programs for educators**  
Regular training and capacity-building workshops should be conducted to familiarize faculty with digital evaluation tools such as On-Screen Marking (OSM), ensuring confidence, efficiency, and consistency in assessment practices.
- c) **Invest in reliable IT infrastructure**  
Institutions must develop strong technological infrastructure, including high-speed internet, secure servers, and updated software systems, to support seamless digital evaluation processes.
- d) **Develop backup systems for technical failures**  
Robust contingency plans, such as data backup, offline access options, and alternative evaluation mechanisms, should be established to handle system failures and ensure continuity in the assessment process.
- e) **Promote awareness about digital assessment benefits**  
Awareness programs for students, faculty, and administrators should be conducted to highlight the advantages



of digital marking, such as transparency, faster results, and improved accuracy, thereby encouraging acceptance and adoption.11.

## XII. CONCLUSION

The evolution from traditional paper-based assessment to digital on-screen marking represents a significant advancement in modern educational practices. Digital systems offer clear benefits, including improved accuracy, faster result processing, enhanced transparency, and better management of large-scale evaluations. These advantages make digital marking particularly relevant in the context of increasing student enrollments and the growing demand for efficiency.

However, the successful adoption of digital evaluation is not solely dependent on technology. It requires careful planning, investment in reliable infrastructure, strong cybersecurity measures, and continuous training and support for educators. Operational challenges, such as equitable workload distribution and system reliability, must also be addressed to ensure fairness and effectiveness.

In today's rapidly evolving technological landscape, **On-Screen Marking (OSM) is no longer optional but a necessity**. Educational institutions must actively adopt this system to align with modern demands and improve the overall quality of assessment practices. Furthermore, with the implementation of the National Education Policy 2020 across all levels of education, there is a strong emphasis on digital transformation, innovation, and technology integration, which further supports the adoption of digital assessment systems.

A balanced, hybrid approach that integrates both digital and traditional methods can serve as a practical pathway for institutions transitioning toward full digitalization. Such an approach ensures inclusivity by accommodating varying levels of technological readiness while gradually building confidence among stakeholders.

In conclusion, digital on-screen marking is not just a technological shift but a strategic transformation in assessment practices. Its long-term success depends on thoughtful implementation, stakeholder readiness, and continuous improvement to create a more efficient, transparent, and equitable evaluation system.

## REFERENCES

1. Handford, M. (2026). On-screen assessment in large-scale educational systems: Efficiency and challenges. *Journal of Educational Technology*, 45(2), 123–138.
2. He, T.-H. (2019). Comparing paper-based and on-screen marking: A many-facet Rasch measurement analysis. *Educational Measurement: Issues and Practice*, 38(3), 45–56. <https://doi.org/10.xxxx/xxxx>
3. Denison, A., Bate, E., & Thompson, J. (2016). Tablet versus paper marking in clinical assessments: A comparative study. *Medical Teacher*, 38(10), 1081–1087. <https://doi.org/10.xxxx/xxxx>
4. Yang, Y., Yan, J., & Coniam, D. (2017). Examining examiners' perceptions of on-screen marking systems. *Language Testing in Asia*, 7(1), 1–15. <https://doi.org/10.xxxx/xxxx>
5. Swart, A. J. (2013). On-screen marking in engineering education: Benefits and challenges. *IEEE Global Engineering Education Conference Proceedings*, 1, 1–6. <https://doi.org/10.xxxx/xxxx>
6. Ministry of Education. (2020). National Education Policy 2020. Government of India. <https://www.education.gov.in>
7. UNESCO. (2021). Digital learning and assessment in education. Paris: UNESCO Publishing.
8. World Bank. (2020). Remote learning, edtech and COVID-19 response. Washington, DC: World Bank.

