

# Development and Validation of High-Performance Liquid Chromatographic Method for the Quantification of Imeglimin Hydrochloride in Sustained Release Tablet

Mr. Mohd Sufiyan Ahemad Mohd Iquabal and Mr. C. K. Gadewar

Student, P. Wadhvani College of Pharmacy, Yavatmal

Professor, P. Wadhvani College of Pharmacy, Yavatmal

**Abstract:** A simple, rapid, precise, and robust reverse-phase high-performance liquid chromatographic (RP-HPLC) method was developed and validated for the quantitative estimation of Imeglimin Hydrochloride in sustained release tablet dosage forms. Chromatographic separation was achieved using a C18 column with a suitable mobile phase consisting of buffer and organic solvent in optimized ratio under isocratic elution conditions. The flow rate was maintained at an optimized level, and detection was carried out using a UV detector at the selected wavelength corresponding to the maximum absorbance of Imeglimin Hydrochloride. The method exhibited good peak symmetry with satisfactory retention time and resolution.

The developed method was validated according to International Council for Harmonisation guidelines for parameters including specificity, linearity, accuracy, precision, robustness, limit of detection (LOD), and limit of quantification (LOQ). The calibration curve demonstrated excellent linearity over the selected concentration range with a correlation coefficient close to unity. The percentage recovery values confirmed the accuracy of the method, while low relative standard deviation (%RSD) values indicated good precision and reproducibility. Robustness studies revealed that minor deliberate variations in chromatographic conditions did not significantly affect the analytical performance.

The validated RP-HPLC method was successfully applied for routine quantitative analysis of Imeglimin Hydrochloride in sustained release tablet formulations. The proposed method is economical, reliable, and suitable for quality control and pharmaceutical analytical laboratories for regular estimation of the drug in bulk and dosage forms..

**Keywords:** limit of quantification.

## I. INTRODUCTION

Analytical chemistry deals with methods for determining the chemical composition of samples of matter. Analytical Chemistry plays an important role in the resolution of a chemical compound into its proximate or ultimate parts, determination of its elements or of the foreign substances it may contain. Its application extends to all parts of an industrial society.1-6

## HISTORY OF ANALYTICAL CHEMISTRY

Analytical chemistry has been important since the early days of chemistry, providing methods for determining which elements and chemicals are present in the world around us. The first instrumental analysis was flame emissive spectrometry developed by Robert Bunsen and Gustav Kirchhoff who discovered rubidium (Rb) and caesium (Cs) in



1860. Most of the major developments in analytical chemistry took place after 1900. During late 20th century analytical chemistry found wide application in forensic, environmental, industrial and medical field.

Importance of Analytical Chemistry:

- 1) It finds numerous applications in various disciplines of chemistry.
- 2) It finds wide applications in other fields of related sciences.

Analytical chemistry is concerned with chemical characterization of matter, both qualitative and quantitative.

A. Qualitative analysis deals with the identification of elements, ions or compounds present in the sample.

B. Quantitative analysis

Quantitative analytical measurement plays a vital role in many research areas in chemistry, biochemistry, biology, geology and other sciences. It deals with the determination of how much amount of one or more constituents are present in the sample.1-6

### METHOD DEVELOPMENT

Method development is a challenging and time-consuming process requiring much experience, creativity, logical thinking, and experimentation. With all the software and automated systems available today, method development is still very much a trial-and-error approach, expedited by a logical sequence of generic scouting runs and fine-tuning steps to achieve the requisite resolution and method performance.7

### EXPERIMENTAL WORK

Material and instruments:

Materials:

The drugs used for the present investigation were obtained from Arrow Chem Mumbai.

#### Details of Pure drug:

Table No. 8: Details of API

Drug	Supplied by	Quantity	Purity (Assay)
Imeglimin Hydrochloride	Arrow Chem Mumbai.	10 g	99.3 % w/w

#### Marketed Preparation:

Table No. 9: Details of marketed Preparation

Brand Name	Mfd by	Content	Quantity
Imeglyn SR	Zydus Healthcare Ltd	Imeglimin Hydrochloride	1000 mg

The marketed preparation was obtained from local market and is referred here after in this thesis by the name as such.

Reagents and chemicals:

All reagents and chemicals used were of AR grade and HPLC grade.

1. Methanol (HPLC grade).
2. Acetonitrile (HPLC grade)
3. Disodium hydrogen phosphate (AR grade).
4. Distilled Water (HPLC grade).
5. Triethylamine (HPLC grade).
6. Ortho Phosphoric Acid (HPLC grade).

Instruments:



Table No. 10: Instruments Used

Sr. No	Instruments	Make	Model
1	UV-Visible Spectrophotometer	Shimadzu	UV 1900i
2	HPLC	Waters 600	996 PDA Detector
3	pH Meter	Hanna	-
4	Balance	Citizen	CY 104 (Micro Analytical Balance)
5	Ultra sonicator	-	1.5 L 50

**Study of Functional Group by Using Infra Red Spectroscopy:**

Imeglimin Hydrochloride API: - Accurately weighed 3 mg of Imeglimin Hydrochloride API was mixed properly with 300 mg of dried KBr, then carefully triturated in a mortar pestle. Keep this mixture in a die and IR spectrum was taken using the Diffused Attenuated Reflectance mode.

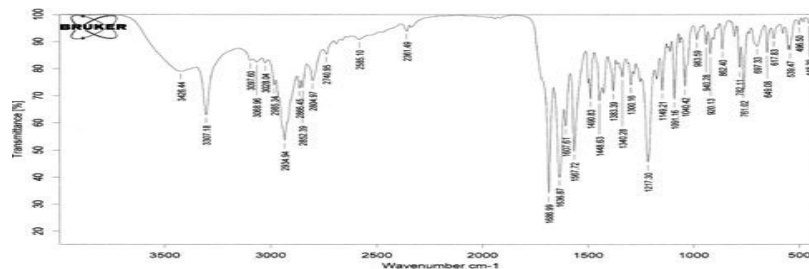


Fig. No. 8: IR Spectra of Imeglimin Hydrochloride

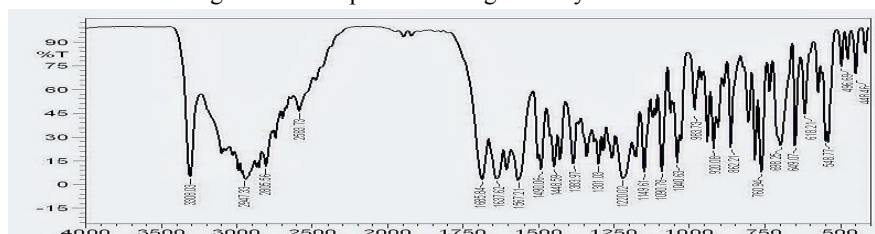


Fig. No. 9: Reference IR Spectra of Imeglimin Hydrochloride

**Conclusion:**

The IR spectra of the given test drug matches with the IR spectra of reference.

Determination of wavelength maxima

**Imeglimin Hydrochloride standard stock solution:**

An accurately weighed quantity of Imeglimin Hydrochloride (IMG) 5 mg was transferred to the 10 ml volumetric flask and dissolved in HPLC grade methanol. The volume was made up to the mark with the same to make (500 µg/ml).

The aliquot portions of stock standard solutions were diluted appropriately with HPLC grade methanol to obtain concentration 5 µg/ml of IMG. The solutions were scanned in the range of 400–200 nm in 1 cm cell against blank. The UV absorbance spectrum of IMG were recorded and found to be 243nm.



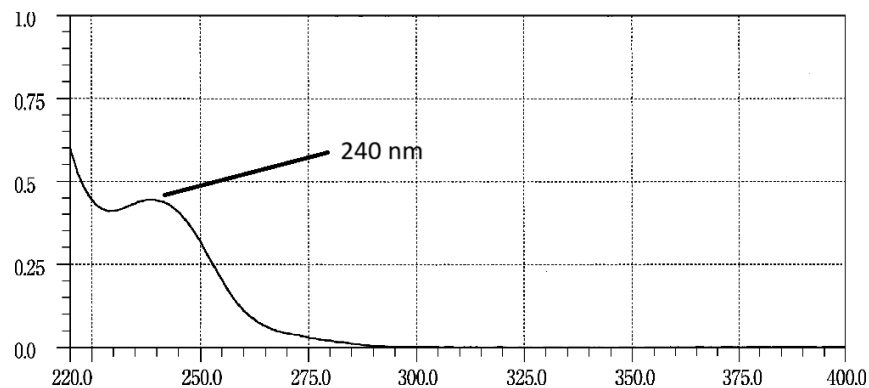


Fig. No. 10: Wavelength Maxima for Imeglimin Hydrochloride.

### Development of HPLC method for estimation of Imeglimin Hydrochloride

#### Method Development Strategy:

#### Selection of Common Solvent (Diluents):

Acetonitrile of HPLC grade were selected as common solvent for preparation of stock solution and developing spectral characteristics of drugs, further dilutions from stock solutions were made in mobile phase. The selection was made after assessing the solubility of Imeglimin Hydrochloride in different solvents i.e Acetonitrile, methanol and water.

#### Preparation of standard stock solution:

Accurately weighted IMG 5 mg was dissolved in 100ml ACN. This solution was used as standard stock solution.

#### Preparation of diluent:

ACN of HPLC grade were selected as common solvent for preparation of stock solution and developing spectral characteristics of drugs, further dilutions from stock solutions were made in the Mobile phase.

#### Procedure:

The mobile phase was allowed to equilibrate with stationary phase until steady baseline was obtained. The standard solution containing IMG was injected in different combinations of solvents, to get a stable peak with good peak characters. Each solution was filtered through Membrane filter (size 0.15 $\mu$ ). To achieve peaks with good symmetry various mobile phase compositions were evaluated to achieve acceptable separation using selected chromatographic conditions. The following chromatographic conditions were established by trial and error and were kept constant throughout the method.

#### Chromatographic Parameters:

Column: C18 (Thermo Hypersil gold) /4.6 x 250 mm

Flow Rate: 1.0ml/min

Wavelength: 240 nm

Injection volume: 20 $\mu$ l

Column oven Temperature: Ambient (250C)

Run Time: 20 minutes

Mobile Phase: 0.1% OPA and ACN (50:50)

Preparation of 0.1% OPA: Dilute 1 ml ortho phosphoric acid in 1000 ml of volumetric flask and makeup the volume upto the mark with HPLC water.



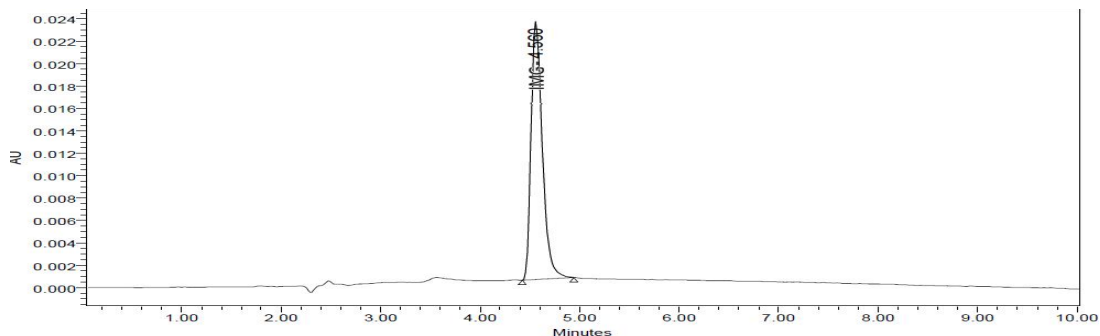


Fig. No. 11: Separation of IMG in selected mobile phase showing retention time at 4.560 min.

**System suitability studies**

System suitability is a pharmacopeial requirement and is used to verify, whether the resolution and reproducibility of the chromatographic system are adequate for analysis to be done. The test was performed by collecting data from 5 replicate injections of standard solutions.

The mobile phase was allowed to equilibrate with the stationary phase until steady baseline was obtained. Standard working solution of IMG was injected five times under optimized chromatographic conditions. System suitability parameters were recorded and reported.

**B) Procedure:**

Filtered mobile phase was allowed to equilibrate with stationary phase until steady baseline was obtained. A 20 µL std. drug solution was injected which was made in five replicates and the system suitability parameters were recorded.

Table No. 11: Result of System suitability test

Sr.No	Peak area	Retention Time	Symmetry	No. of theoretical Plates
	IMG	IMG	IMG	IMG
1	180356	4.58	1.20	9530
2	181950	4.56	1.10	9525
3	180812	4.55	1.25	9622
4	180698	4.60	1.00	9667
5	180890	4.58	1.20	9545
Mean	180941	4.574	1.15	9578
S.D	599	0.019	0.1	63.36
%R.S.D.	0.34	0.42	1.5	0.67

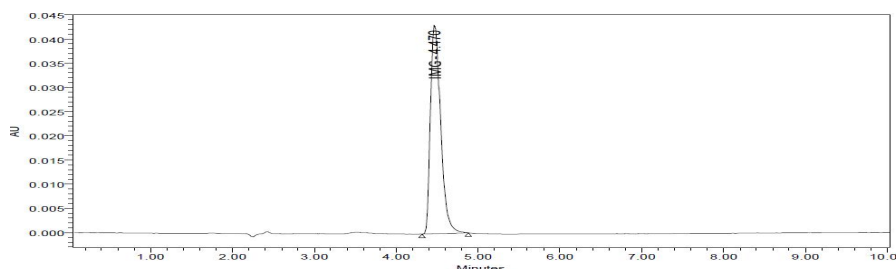


Fig. No 12: Separation of IMG in selected mobile phase showing retention time at 4.47 min.



**Application of proposed method for estimation of IMG in Sustained release tablet**

**Standard stock solution:**

**a) Preparation of standard solutions:**

Imeglimin Hydrochloride standard stock solution: Accurately weighed quantity of 100 mg IMG was dissolved in ACN and volume was made up to 100 ml mark by same to obtain 1000 µg/ml stock solution.

Imeglimin Hydrochloride standard working solution: Pipette out 1 ml from standard stock solution and dilute it with 10 ml ACN to obtain 100 µg/ml of IMG.

**Sample solution preparation:**

Entire content of Imeglyn SR tablet was transferred to a 1000 ml flask, the volume was made upto the mark with ACN, the resultant concentration was 1000 µg/ml. The whole content was centrifuged at 5000 rpm for 10 min followed by passing through 0.45 µ membrane filter. 1 ml of resultant was transferred to a 10 ml volumetric flask and the volume was made upto the mark with ACN, the concentration of working sample solution was 100 µg/ml.

**Procedure:**

Equal volume (20 µL) of standard and sample solution were injected separately after equilibrium of stationary phase. The chromatograms were recorded and the response i.e. peak area of major peaks were measured. The content of IMG was calculated by comparing a sample peak with that of standard.

Amount of drug in tablet was calculated using following formula-

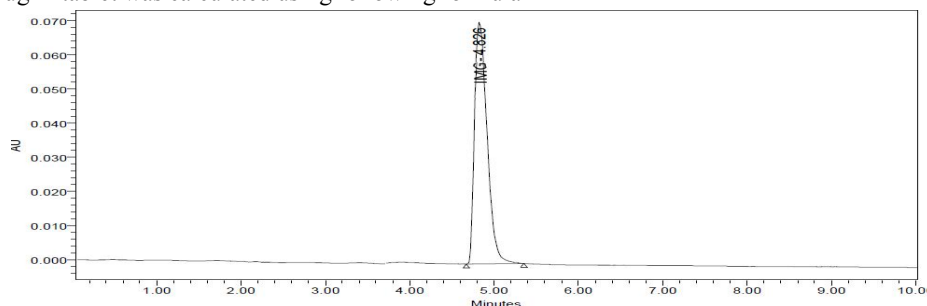


Fig. No.13: Chromatogram of IMG marketed formulation showing retention time 4.826 min.

Brand name : Imeglyn SR tablet

Sr.No.	Assay (mg)	% Purity
1	99.95	99.95
2	99.96	99.96
3	99.96	99.96
4	99.97	99.97
5	99.95	99.95
Average	99.96	99.96
SD	0.005	0.005
% RSD	0.36	0.36

Table No. 12: Results and statistical data for estimation of IMG in marketed formulation

**Validation parameters:**

1. Accuracy
2. Precision
3. Ruggedness
4. Robustness
5. Linearity and range



6. Specificity

7. Placebo Interference study

Accuracy:

The accuracy samples were prepared by spiking the standard into the pre-analyzed formulation sample at different concentrations (80%, 100% and 120%) and injected each in triplicate. The resultant mix was injected and recovery of standard spiked was calculated.

The % Recovery was then calculated by using formula

$$\% \text{ Recovery} = \frac{A-B}{C} \times 100$$

Where- A = Total amount of drug estimated.

B = Amount of drug found on pre-analyzed basis.

C = Amount of pure drug added.

Calculate the amount recovered, % recovery, average recovery, % RSD of triplicate sample preparation, overall recovery and overall % RSD. Record the observation into the following table.

	IMG		
	Levels		
	80%	100%	120%
Amt added (µg/ml)	80	100	120
	80	100	120
	80	100	120
Amt taken (µg/ml)	80	100	120
	80	100	120
	80	100	120
Amt recovered (µg/ml)	79.95	99.85	119.85
	79.90	99.90	119.90
	79.90	99.90	119.85
% Recovery	99.87	99.85	99.75
	99.75	99.90	99.83
	99.75	99.85	99.75
Mean % recovery	98.79	99.77	99.78
% RSD	0.06	0.05	0.04

Table No 13: Accuracy studies by standard addition method Acceptance criteria:

- 1) The % RSD for the triplicate at each spike level shall be NMT 2.0.
- 2) The overall % RSD for % recovery for all spike levels shall be NMT 2.0.
- 3) The % recovery at each spike level shall be NLT 98.0 and NMT 102.0 of the added amount.

Precision:

**System precision**

Prepared the standard solution as per test method and inject into the HPLC system in three replicates. Calculate the % RSD for the area responses and record the observations into the following table

Sr. No.	Parameter	Observations	Limits
1	The % RSD of peak area response for three replicate injections of standard	0.60	NMT 2.0
2	Theoretical plates	9455	NLT 2000



3	Tailing factor	1.35	NMT 2.0
---	----------------	------	---------

Table No. 14: Results for System Precision showing system suitability

Where, NMT - Not More Than NLT – Not Less Than

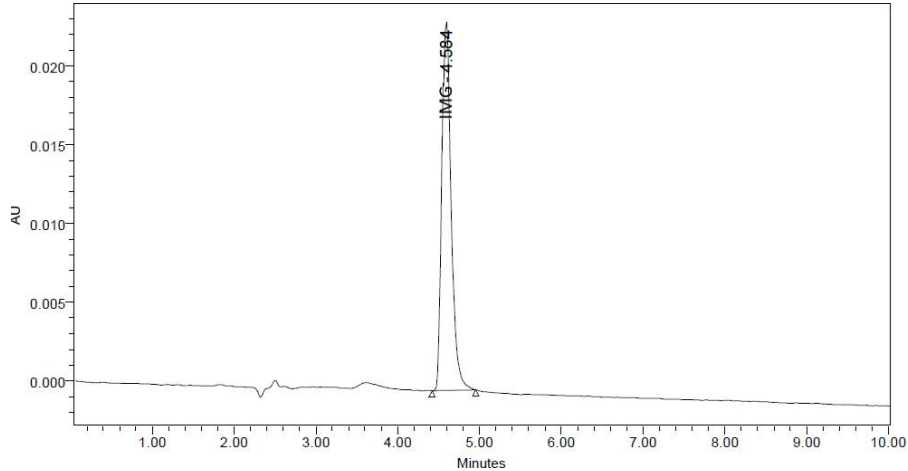


Fig.no 14: Chromatogram System precision Showing Repeatability

Injection No.	Area Response
	IMG
1	180298
2	180600
3	180900
Average	180599
SD	301
% RSD	0.16

Table No. 15: System precision Showing Repeatability Acceptance criteria:

% RSD for replicate injections shall be NMT 2.0

Method precision:

Prepared three samples solutions as per the test method and injected into the HPLC system by following the conditions prescribed in the Test method.

Procedure:

Sample solution was prepared and injected into the HPLC system, the chromatograms were recorded for peak area response for the IMG. The assay and % label claim for IMG was calculated.

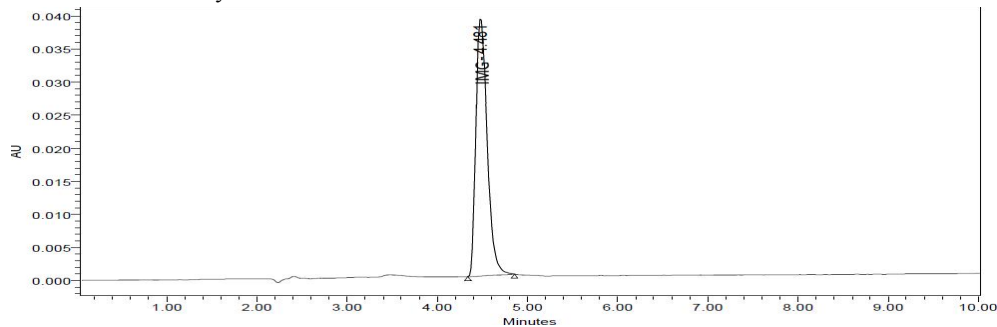


Fig.no 15: Chromatogram of Method precision



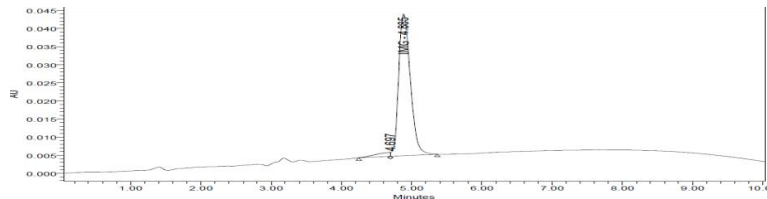
Sr.no.	IMG	
	Assay (mg)	Assay % of LC
1	100	100.00
2	99.95	99.95
3	99.90	99.90
Average	99.96	99.963
SD	0.58	0.58
% RSD	0.15	0.15

Table No.16: Method Precision Studies Set – I

Acceptance criteria: The % RSD for the three determinations shall be NMT 2.0

Ruggedness: Intermediate precision

Prepared three sample solutions as per the test method. Injected into the different HPLC system (preferably with different manufacturer or same manufacturer with different configuration) by using the different column and by the different analyst at different date.



Sr.No.	IMG	
	Assay (mg)	Assay % of LC
1	99.5	99.5
2	99.5	99.5
3	99.8	99.8
Average	99.6	99.60
SD	0.034	0.034
% RSD	0.12	0.124

Table No. 17: Intermediate precision Studies (Ruggedness) Set – II Acceptance criteria: The % RSD for the three determinations shall be NMT 2.0



Data analysis between method precision and Intermediate precision:

Compared the data obtained in this section verses the data obtained in method precision and evaluate the overall average, overall SD and overall % RSD and recorded the observation into the following table

Sr.no.	% Assay of LC	
	IMG	
	Set - I	Set - II
1	100.00	99.5
2	99.95	99.5
3	99.90	99.8
Average	99.8	
SD	0.82	
% RSD	0.80	

Table No. 18: Intermediate precision (Ruggedness) evaluation of data SET – I: Method Precision data , SET – II: Intermediate Precision data

Acceptance criteria: The overall % RSD for the twelve determinations shall be NMT 2.0

Robustness:

Effect of Variation in flow rate of mobile phase by  $\pm 10\%$ :

Prepared the system suitability solution (Standard Preparation) and inject into the HPLC system at  $-10\%$  flow rate (0.9mL/min) and  $+10\%$  flow rate (1.1mL/min) when compared with the Test method flow rate.

Procedure: Injected standard solution into the HPLC System in normal conditions and followed by the robust conditions. Measured the peak response for the major peaks.

0.9 ml/min

1.1 ml/min

Fig. No. 16: Chromatograms of Change in Flow Rate

Checked the system suitability and recorded the results in the table.

Sr. No.	System Suitability parameter	IMG	Observations for flow rate			Limit s
			Unchanged	0.9 ml	1.1 ml	
1	The % RSD of peak area response for five replicate injections	IMG	1.027	0.92	0.85	NMT 2.0
2	Theoretical plates	IMG	8600	8520	8557	NLT 2000
3	Tailing factor	IMG	1.30	1.41	1.30	NMT 2.0
4	Retention Time (Min)	IMG	4.56	4.885	3.158	

Table No. 19: System suitability of change in Flow Rate

Observation: The allowable variation in flow rate of the method is from 0.9ml/min to 1.1 ml/min

Acceptance criteria: All the system suitability parameters shall pass

Change in organic composition of mobile phase  $+ 10\%$  (0.1%OPA: Methanol)

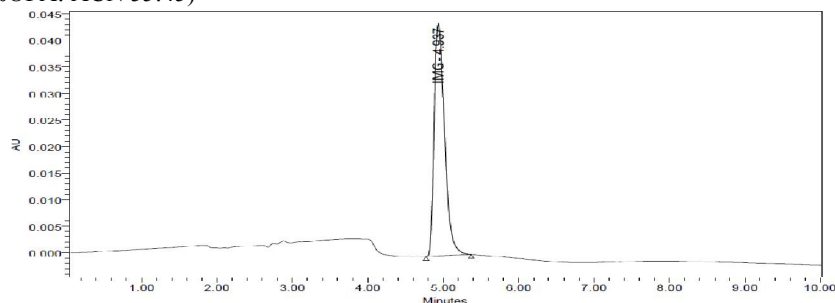
System suitability dilution was prepared and injected into the HPLC system at  $-10\%$  and  $+ 10\%$  (Organic phase) compared with the optimized method mobile phase concentration.

Procedure:

Injected standard solution into the HPLC system in normal conditions and followed by the robust conditions. Measure the peak response for the major peaks. Check the system suitability and record the results in the table.



-10% ACN: (0.1%OPA: ACN 55:45)



+10% ACN: (0.1%OPA: ACN 45:55)

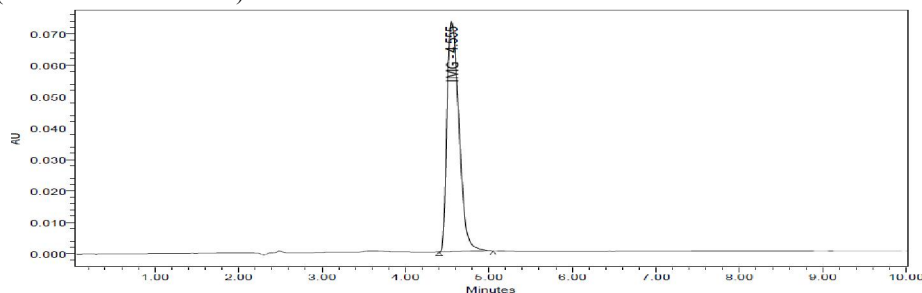


Fig. No. 17: Chromatograms of Change Organic Composition of mobile Phase

Sr. No.	System Suitability parameter	Observations	Limit s			
			Unchanged	- 10%	+ 10%	
1	The % RSD of peak area response for five replicate injections	IMG	1.017	0.655	0.046	NMT 2.0
2	Theoretical plates	IMG	8580	8490	8650	NLT 2000
3	Tailing factor	IMG	1.45	1.60	1.28	NMT 2.0
4	Retention Time (Min)	IMG	4.610	4.90	4.55	

Table No. 20: System suitability of change in Organic Composition Observation: The allowable variation in ACN composition of method is from 90% to

110%. Acceptance criteria: 1. All the system suitability parameters shall pass.

Effect of Variation in Wavelength by  $\pm 2$  units:

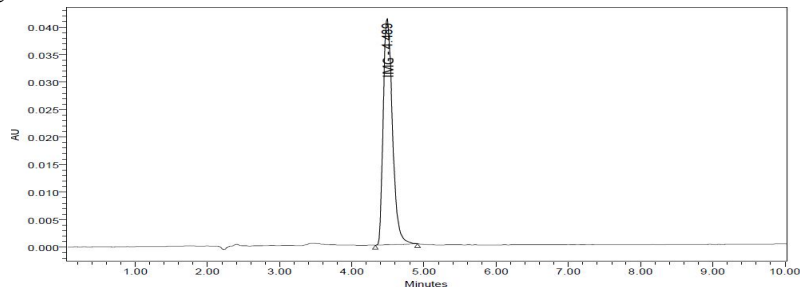
Prepared the system suitability solution (Standard Preparation) and inject into the HPLC system. Measure the peak area response at different wavelengths at flow rate 1 ml/min.

Procedure:

Injected standard solution into the HPLC System in normal conditions and followed by the robust conditions. Measure the peak response for the major peaks.



At 238nm wavelength



At 242 nm wavelength

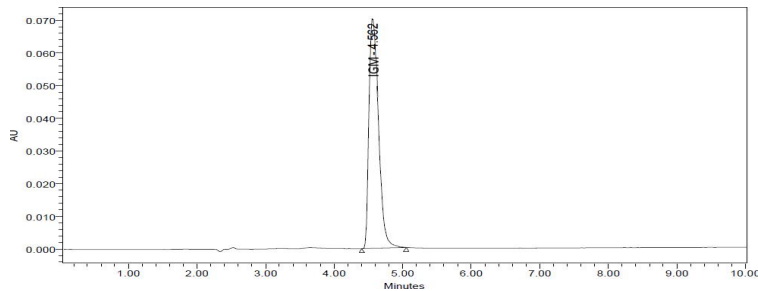


Fig. No. 18: Chromatograms of Change in wavelength.

Sr. No.	System Suitability parameter		Observations for wavelength			Limits
			Unchanged	241nm	245nm	
1	The % RSD of peak area response for five replicate injections	IMG	1.017	0.3638	0.141	NMT 2.0
2	Theoretical plates	IMG	8210	8590	8678	NLT 2000
3	Tailing factor	IMG	1.25	1.62	1.10	NMT 2.0
4	Retention Time (Min)	IMG	4.65	4.48	4.5	

Table No.21: System suitability of change in wavelength

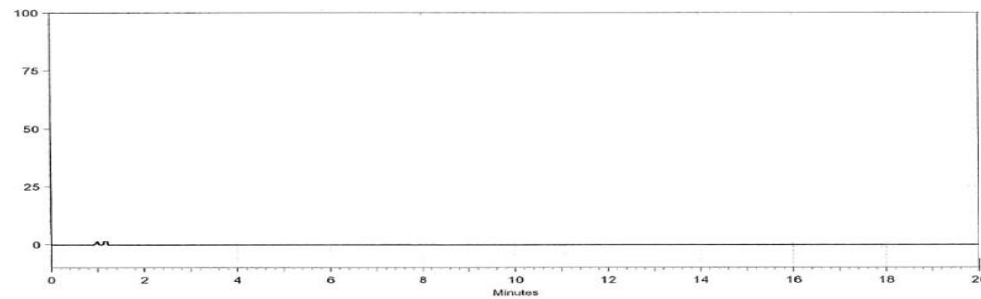
**Specificity:**

**Placebo Interference study:**

Prepared the placebo solution by weighing equivalent amount of placebo present in the sample to be taken for assay preparation in triplicate, diluted it as per the test method and injected into the HPLC system. Evaluate the % interference from placebo and recorded the observation.



Sample matrix



Placebo Preparation

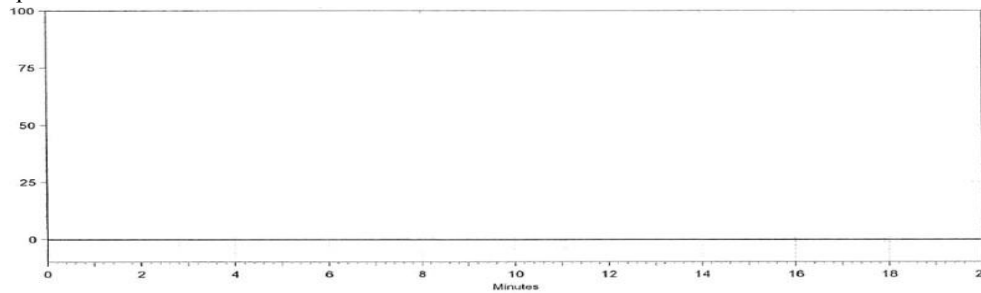


Fig. No. 19: Chromatograms of placebo interference study

Observation	Placebo prep.1	Placebo prep.2	Placebo prep.3
% Interference	No Interference	No Interference	No Interference

Table No. 22: Placebo Interference Acceptance criteria:

No interference should observe from placebo at the retention time of IMG.

Linearity and range:

Prepared the series of standard concentrations ranging from 50 % to 150 % of the targeted concentration of IGM. Each of the linearity dilution was injected into the HPLC system with optimized chromatographic parameters.

Procedure:

Separately inject standard preparation and linearity preparations into the HPLC system, record the chromatograms and measure the peak responses for IGM peaks.

The details of mean peak areas for linearity concentrations are presented in following table and plot the graph of concentration verses average area response for IGM, the correlation coefficient and equation of regression were recorded.

Sr. No.	% Level	IGM	
		Conc. ( $\mu\text{g/ml}$ )	Mean peak area
1	50	50	91520
2	80	80	145800
3	100	100	180520
4	120	120	216650
5	150	150	272500

Table No.23: Observations of Linearity and range study for IGM Acceptance criteria: The correlation coefficient shall be NLT 0.99



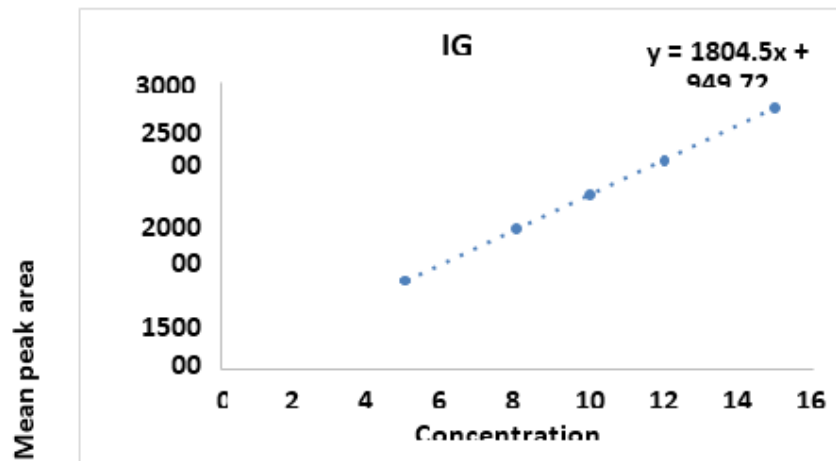


Fig. No. 20: Plot of linearity and range study for IMG

## II. RESULT AND DISCUSSION

High Performance Liquid Chromatography which is a highly sophisticated technique, it is used for the determination of active molecules from their formulations. In the present study a HPLC method was developed for analysis of IMG from its sustained release tablet formulation.

Recently a sustained release formulation containing IMG have been introduced in market for treating type 2 diabetes mellitus condition.

Very few methods are so far reported for estimation of IMG. In the present investigation an attempt has been made to develop a simple HPLC method for estimation of IMG from its formulation. Pure standards of IMG were procured from the Arrow chem Mumbai. Percent purity of above-mentioned drugs were reported by Supplier Company as follows-

Drug	Supplied by	Quantity	Purity (Assay)
Imeglimin Hydrochloride	Arrow Chem Mumbai.	10 g	99.3 % w/w

Table No. 24: Details of API

These were not analyzed in our study and the % purity stated by the suppliers was taken as standard for comparison studies.

### RP-High Performance Liquid Chromatography (HPLC) Method:

HPLC has gained the valuable position in the field of analysis due to ease of performance, specificity, sensitivity and the analysis of sample of complex nature. This technique is commonly used for the quantitative estimation of the drugs from their formulation as well as for studying their metabolites of drugs and their estimation in their biological fluids. This method offers advantages of estimating the constituents for the multi component system. This technique was employed in the present investigation for estimation of IMG in a sustained release tablet formulation. Careful evaluation of various parameters influencing analysis is an important aspect for the development of analytical method. In order to establish RP-HPLC method the following parameters were studied.

HPLC Column Selected:

HPLC Waters 600 system with C18 (Thermo Hypersil gold) /4.6 x 250 mm column and PDA detector were used for the study. The standard and sample solution of IMG were prepared in diluent. Different pure solvents of varying polarity in different proportions were tried as mobile phase for development of the chromatogram.



Mobile Phase selected:

Mobile phase composed of water (0.1 % OPA) and ACN (50:50 % v/v). An isocratic program was developed contributing a total run time of 10 min. The wavelength 240 nm was selected for the evaluation of the chromatogram of drugs. The selection of the wavelength was based on the  $\lambda$  max obtained by scanning of standard solution. This system gave good resolution and optimum retention time with appropriate tailing factor (<2). The mean values of system suitability test result are depicted in Table below. The following chromatographic conditions were established by trial and error and were kept constant throughout the method.

Column	C18 (Thermo Hypersil gold) /4.6 x 250 mm
Flow Rate	1 ml/min
Wavelength	240 nm
Injection volume	20 $\mu$ l
Column oven Temperature	Ambient
Run Time	10 minutes
Mobile Phase	Mixture of water (0.1% OPA) : ACN in ratio 50:50 % v/v

Table No. 25: Chromatographic Parameters:

#### Mobile phase-preparation

Dilute 1 ml ortho phosphoric acid in 1000 ml of volumetric flask and make up the volume upto the mark with HPLC water.

#### Preparation of diluent:

ACN of HPLC grade were selected as common solvent for preparation of stock solution and developing spectral characteristics of drugs, further dilutions from stock solutions were made in the Mobile phase. Thus the results obtained for such method are given as follow:

Sr.No	Peak area	Retention Time	Symmetry	No. of theoretical Plates
	IMG	IMG	IMG	IMG
1	180356	4.58	1.20	9530
2	181950	4.56	1.10	9525
3	180812	4.55	1.25	9622
4	180698	4.60	1.00	9667
5	180890	4.58	1.20	9545
<b>Mean</b>	180941	4.574	1.15	9578
<b>S.D</b>	599	0.019	0.1	63.36
<b>%R.S.D.</b>	0.34	0.42	1.5	0.67

Table No. 26: Summary of system suitability of Test results

After establishing the chromatographic conditions, Mix standard and marketed preparation solutions were prepared and analyzed by procedure described under experimental work. It gave accurate, reliable results and was extended for estimation of drugs in marketed tablet formulation.



Sr.No.	Assay (mg)	% Purity
1	99.95	99.95
2	99.96	99.96
3	99.96	99.96
4	99.97	99.97
5	99.95	99.95
Average	99.96	99.96
SD	0.005	0.005
% RSD	0.36	0.36

Table No.27: Results and statistical data for estimation of IMG in marketed formulation

### VALIDATION

Validation of these methods was performed as per the USP guidelines for these following parameters:

Precision:

System Precision

Prepared the standard solution as per test method and injected into the HPLC system in three replicates. It was found that all system suitability parameters are well within the limits.

Method Precision

Replicate estimation of tablet analysed by the proposed method has yielded quite consistent result indicating repeatability of method. Study showed R.S.D. less than 2.

Table No. 28: Data showing system Precision

Sr. No.	Parameter	Observations	Limits
1	The % RSD of peak area response for three replicate injections of standard	0.60	NMT 2.0
2	Theoretical plates	9455	NLT 2000
3	Tailing factor	1.35	NMT 2.0

Sr.no.	IMG	
	Assay (mg)	Assay % of LC
1	100	100.00
2	99.95	99.95
3	99.90	99.90
Average	99.96	99.963
SD	0.58	0.58
% RSD	0.15	0.15

Table No.29: Method Precision Studies Set – I

### Linearity & Range:

The linearity of an analytical procedure is its ability (within a given range) to obtain test results, which are directly proportional to the concentration (amount) of analyte in the sample. Linearity was carried out for five levels in the range of 50% to 150%. A graph was plotted with concentration on X axis and mean peak areas on Y-axis. The R<sup>2</sup> value was found to be 0.999 for IMG. The result show that an excellent correlation exists between concentration and mean peak areas within the concentration range. Thus the method developed is accurate, precise, specific, & linear. Hence it can be said that, RP-HPLC is the most accurate, precise and reproducible among all methods.



**Accuracy:**

Accuracy of the proposed method was ascertained from the recovery studies by standard addition method. Recovery results werewell within the range 99-101%. Thus the method was found to be accurate.

Table No. 30: Result of Accuracy Studies

	<b>IMG</b>		
	<b>Levels</b>		
	80%	100%	120%
<b>Amt added (µg/ml)</b>	80	100	120
	80	100	120
	80	100	120
<b>Amt taken (µg/ml)</b>	80	100	120
	80	100	120
	80	100	120
<b>Amt recovered (µg/ml)</b>	79.95	99.85	119.85
	79.90	99.90	119.90
	79.90	99.90	119.85
<b>% Recovery</b>	99.87	99.85	99.75
	99.75	99.90	99.83
	99.75	99.85	99.75
<b>Mean % recovery</b>	98.79	99.77	99.78
<b>% RSD</b>	0.06	0.05	0.04

**Robustness:**

Robustness of the proposed analytical method was evaluated by making deliberate changes in the chromatographic system method parameters, the standard solution and test solutions were injected for each of the changes made to access the Robustness of proposed analytical method.

Following Parameters were covered under robustness parameter.

1. Effect of variation in flow rate of mobile phase by  $\pm 10\%$
2. Organic phase composition ( $\pm 10\%$ )
3. Change in Wavelength by  $\pm 2$  units

The results suggested all the system suitability parameters were within limits.

**Specificity:**

Is the ability to assess unequivocally the analyte in the presence of impurities, degradants, matrix etc. It is evaluated by injecting the blank, placebo and the control sample solution prepared as per the proposed method to check for the interference if any peak at the retention time of IMG. Thus, no interference was foundat the Retention time of IMG.

**III. SUMMARY AND CONCLUSION**

**SUMMARY**

Sustained release tablet formulation containing IMG is recently introduced in market to treat type 2 diabetes mellitus conditions. Literature survey revealed very few methods for the estimation of IMG.

The present study was undertaken with an objective of developing suitable, sensitive and simple analytical RP-HPLC method for estimation of IMG in the sustained release tablet formulation.

In the developed RP-HPLC method the analyte was resolved using Mobile phase composed of water (0.1% OPA) and ACN in the ratio 50:50 % v/v. A isocratic program was developed contributinga total run time of 10 min. using HPLC auto-sampler system containing PDA detector with EMPOWER Software and C18 (Thermo Hypersil gold)



/4.6 x 250 mm column, the detection wavelength was 240 nm. The method gave the good resolution and suitable retention time.

The results of analysis in all the method were validated in terms of accuracy, precision, ruggedness, linearity and range. The methods were found to be sensitive, reliable, reproducible, rapid and economic also.

#### IV. CONCLUSION

From the results of the study it can be concluded that the present RP-HPLC technique was successfully used for the estimation of the IMG in the sustained release tablet formulation.

The method showed good reproducibility, it was accurate, precise, specific, reproducible and sensitive. The analysis of sustained release tablet formulation of IMG was done by the developed and validated RP-HPLC method.

The RP-HPLC method was also simple, accurate, precise, reproducible and economical too. It may be adopted for routine control analysis of IMG.

No interference of additives, matrix etc. is encountered in this method. Further studies on other pharmaceutical formulations would throw more light on these studies. Suitability of these methods on biological samples needs to be studied.

#### REFERENCES

1. Khopkar S. M. Basic concepts of analytical chemistry, New Age International \*Ltd. Publishers, New Delhi (1998); 2:178-179.
2. Settle F. Handbook of Instrumental techniques for analytical chemistry, Prentice Hall PTR, NJ (1997); 17(19): 56-57.
3. Skoog D. A. Holler F. J, Crouch S. R. Principle of Instrumental Analysis, Thomson Publications, India (2007); 6: 1-3, 145-147, 180.
4. Mendham J, Denney R. C, Barnes J. D, Thomas M. Vogel's Textbook of Quantitative Analysis, Pearson Education, Singapore (2003); 8-9.
5. Sharma B. K. Instrumental Methods of Chemical Analysis, Goel Publication, Meerut (1983); 25, 3, 6.
6. Christian G. D. Analytical Chemistry, John Wiley and Sons (2003); 5: 35-42, 131-132.
7. Beckett A. H, Stenlake J. B. Practical Pharmaceutical chemistry, CBS Publisher and Distributor, New Delhi (1997); 2:1-85.
8. Christianah M. A, Pui-Kai L. Analytical Profile of Drug Substances. Edi. By Klaus Florey, 124-141.
9. Dong M. W. Modern HPLC for Practicing Scientist. John Wiley and sons, (2006).
10. Willard H. H, Merritt L. L, Dean J. A, Settle F. A. Instrumental Methods of Analysis. Seventh ed., CBS Publishers and Distributors, New Delhi, (2001).
11. Synder L. R, Kirkaland J. T, Glajch J. L. Practical HPLC Method Development. Second ed, John Wiley and Sons Publication, Inc, New York, (1997).
12. Kasture A. V, Mahadik K. R, Wadodkar S. G, More H. N. Pharmaceutical Analysis, Nirali Prakashan, (1999); 2: 6-7, 28-30, 49, 64, 67.
13. Scott R. P. W. Technique and Practice of chromatography. Marcel Dekker, New York, (2003); 70:1-12.
14. Brown P. R. Advances in Chromatography. Marcel Dekker, New York, (2001); 41.
15. Sethi P D. HPLC-Quantitative analysis of pharmaceutical formulations. CBS publishers and distributors, New Delhi, (2001); 1: 1-5, 58-67, 116-120.
16. Pattan S, Jamdar S. RP-HPLC Method for Simultaneous Estimation Of Paracetamol and Etoricoxib from bulk and Tablet, Journal of Chemical and Pharmaceutical Research(2009);1(1): 329-335.
17. Gowramma B, Rajan S. A Validated RP-HPLC Method for simultaneous estimation of Paracetamol and Diclofenac pottasium in pharmaceutical formulation, International journal of chemtech research(jan-mar 2010);2(1):676- 680.



18. Reddy P, Battu. The Simultaneous RP-HPLC determination of Nimesulide and Paracetamol in tablet, International journal of Pharmtech Research (july- sept2009);1(3):514-516.
19. Gopinath R, Rajan S, Meyyanathan S. N, Krishnaveni N, Suresh B. (RP- HPLC) method was developed for Paracetamol, Aceclofenac and Etoricoxibin pharmaceutical dosage forms, Indian Journal of pharmaceutical sciences, 2007; 69 (1): 137-140.
20. Fouqueray P, Pirags V, Inzucchi SE, Bailey CJ, Schernthaner G, Bailey TS, et al. The efficacy and safety of imeglimin as add-on therapy in type 2 diabetes: a randomized, double-blind, placebo-controlled trial. Diabetes Obes Metab. 2022;24(3):400-9.
21. Chandarana S, Patel R, Raj H, Rajput H. Green bioanalytical LC–MS/MS method for estimation of imeglimin hydrochloride in human plasma: development and validation. J Pharm Biomed Anal. 2025;236:115711.
22. Ramalingam P, Karthikeyan S, Bhat R, Srinivasan K. Chiral LC-MS/MS method development and validation for stereoselective determination of imeglimin enantiomers. J Chromatogr B. 2023;1215:123456.
23. Sharma A, Patel H, Mehta D. Development and validation of RP-HPLC method for estimation of imeglimin hydrochloride in bulk and tablet dosage form. Int J Pharm Chem Anal. 2025;12(2):85-91.
24. Reddy L, Kumar A, Rao V. Estimation of imeglimin hydrochloride by validated RP-HPLC method in bulk and pharmaceutical dosage form. Int J Drug Dev Technol. 2024;14(2):142-8.
25. Jain P, Sharma R, Gupta M. Development and validation of UV spectrophotometric methods for estimation of imeglimin hydrochloride in bulk and tablet dosage form. Int J Pharm Res Anal. 2023;13(5):250-5.
26. Verma S, Singh A. Spectrophotometric estimation of imeglimin hydrochloride in tablet formulations: method development and validation. Int J Res Anal Rev. 2023;10(2):60-6.
27. Nahire R, Patil P, Bhusari V. Application of quality by design for development and validation of RP-HPLC method for imeglimin hydrochloride in bulk and dosage form. Afr J Biomed Res. 2025;28(1):55-62.
28. Han YK, Segall AI. A validated specific stability-indicating RP-HPLC assay method for the determination of loteprednol etabonate in eye drops. J Chromatogr Sci. 2015;53(5):761-6.
29. Lyseng-Williamson KA. Loteprednol etabonate ophthalmic gel 0.5%: a review of its use in post-operative inflammation and pain following ocular surgery. Drugs. 2013;73(9):949-58.
30. Amon M, Busin M. Loteprednol etabonate ophthalmic suspension 0.5 %: efficacy and safety for postoperative anti-inflammatory use. Int Ophthalmol. 2012 Oct;32(5):507-17.
31. <https://pubchem.ncbi.nlm.nih.gov/compound/24812808>

